

The image shows a YouTube video player interface. The video content is a graphic illustration of a scroll held up by two cartoon heads. The scroll features the text 'DFTBA!' in a yellow speech bubble, a red dome icon, the word 'GOVERNMENT' in a red banner, and 'CRASH COURSE' in a large blue banner. Below the scroll is a green apple with a yellow worm. The background is a stylized classical building with columns. In the top right corner of the video frame, there is a logo for 'PBS DIGITAL STUDIOS' with the text 'PRODUCED IN ASSOCIATION WITH:'. A large black overlay with orange text reads 'Click here to start 8 minute video'. Below the video frame, the video title 'Gerrymandering: Crash Course Government #37' and episode information 'Episode 37 | 7m 54s' are visible. On the right side, there is a '+ My List' button and a 'Continuous Play' toggle switch set to 'On'.

PRODUCED IN ASSOCIATION WITH:
PBS DIGITAL STUDIOS

DFTBA!

GOVERNMENT

CRASH COURSE

[Click here to start 8 minute video](#)

CRASH COURSE GOVERNMENT AND POLITICS

Gerrymandering: Crash Course Government #37

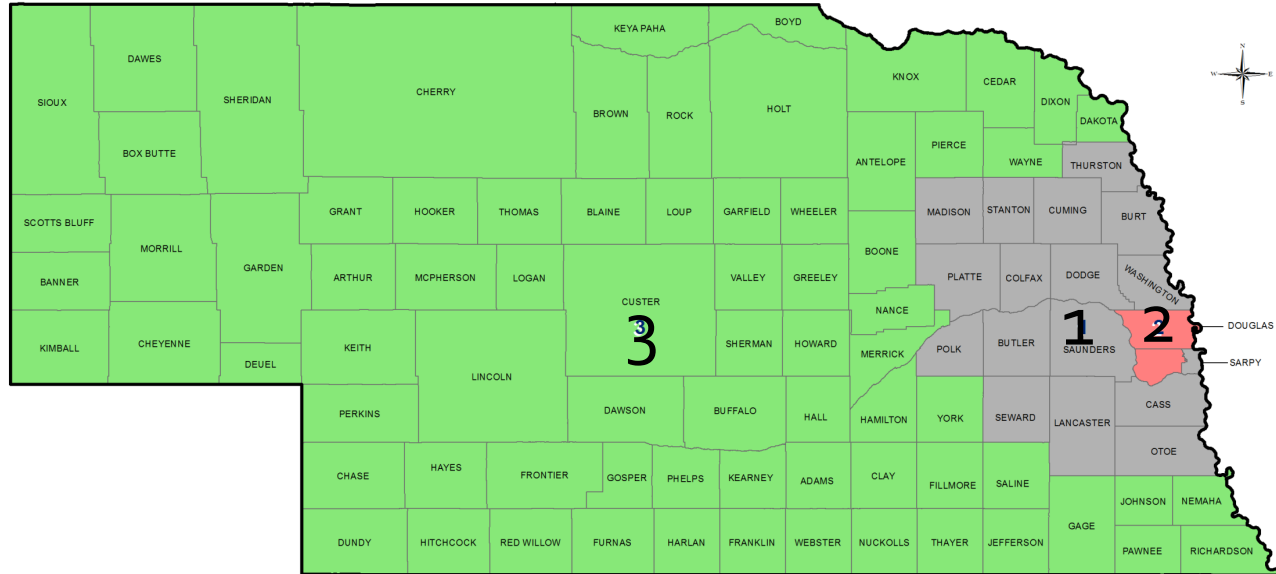
Episode 37 | 7m 54s

+ My List

Continuous Play On

U.S. House of Representatives - LB 704 (2011)

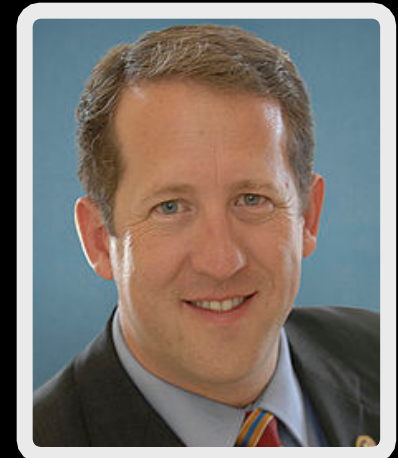
(Districts took effect May 27, 2011)



Geographic Information Systems
Map Created by: Trisha Schlake, GIS Specialist
Source: U.S. Census Bureau
Date Created: 6-27-2011

0 80 160 Miles

3 Districts



Elected Positions Subject to Redistricting

Elected Position	# Districts
Nebraska State Legislature (Unicameral)	49
Nebraska Supreme Court Judicial Districts	6
Nebraska State Board of Education	8
University of Nebraska Board of Regents	8
Public Service Commission	5



SNAPSHOT



A policy brief from the Legislative Research Office

A Brief History of Legislative Redistricting in Nebraska



https://nebraskalegislature.gov/pdf/reports/research/snapshot_redistricting_2018.pdf

2011 Nebraska Redistricting

- ★ Redistricting Committee selected by Legislature's Executive Board.
 - Due to term limits no committee member had any prior redistricting experience.

- ★ Guidelines adopted including:
 - No consideration given to political affiliation.
 - Plans must be within 1 % (plus or minus .5 %), based on the ideal district population.

- ★ Public hearings held with considerable outcry.
 - Many complaints afterwards.
 - No changes made.

[Ballotpedia](#)



Can Gerrymandering happen here?
Aren't we the good guys?

NEBRASKA

Three examples why the
2011 process was
viewed as unfair.



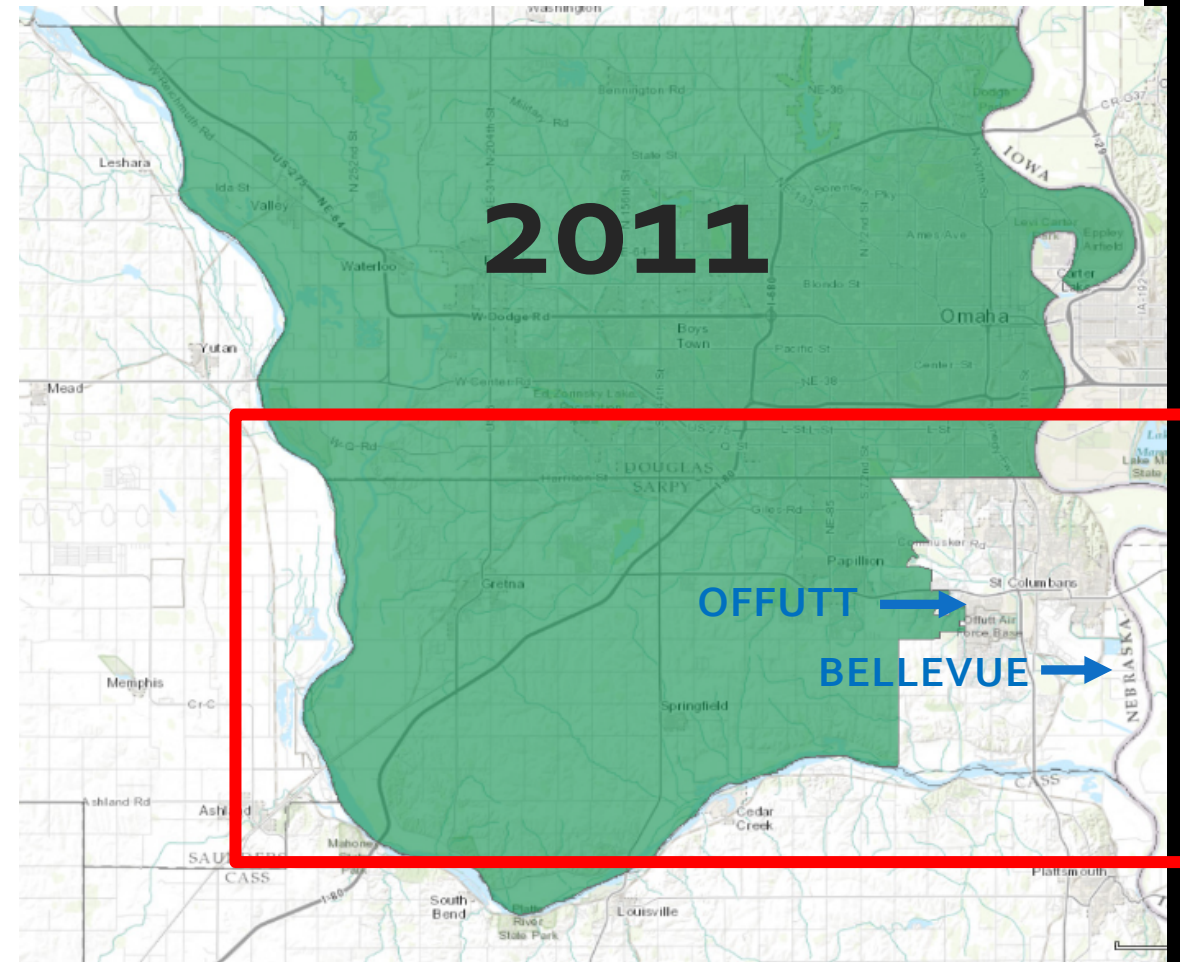
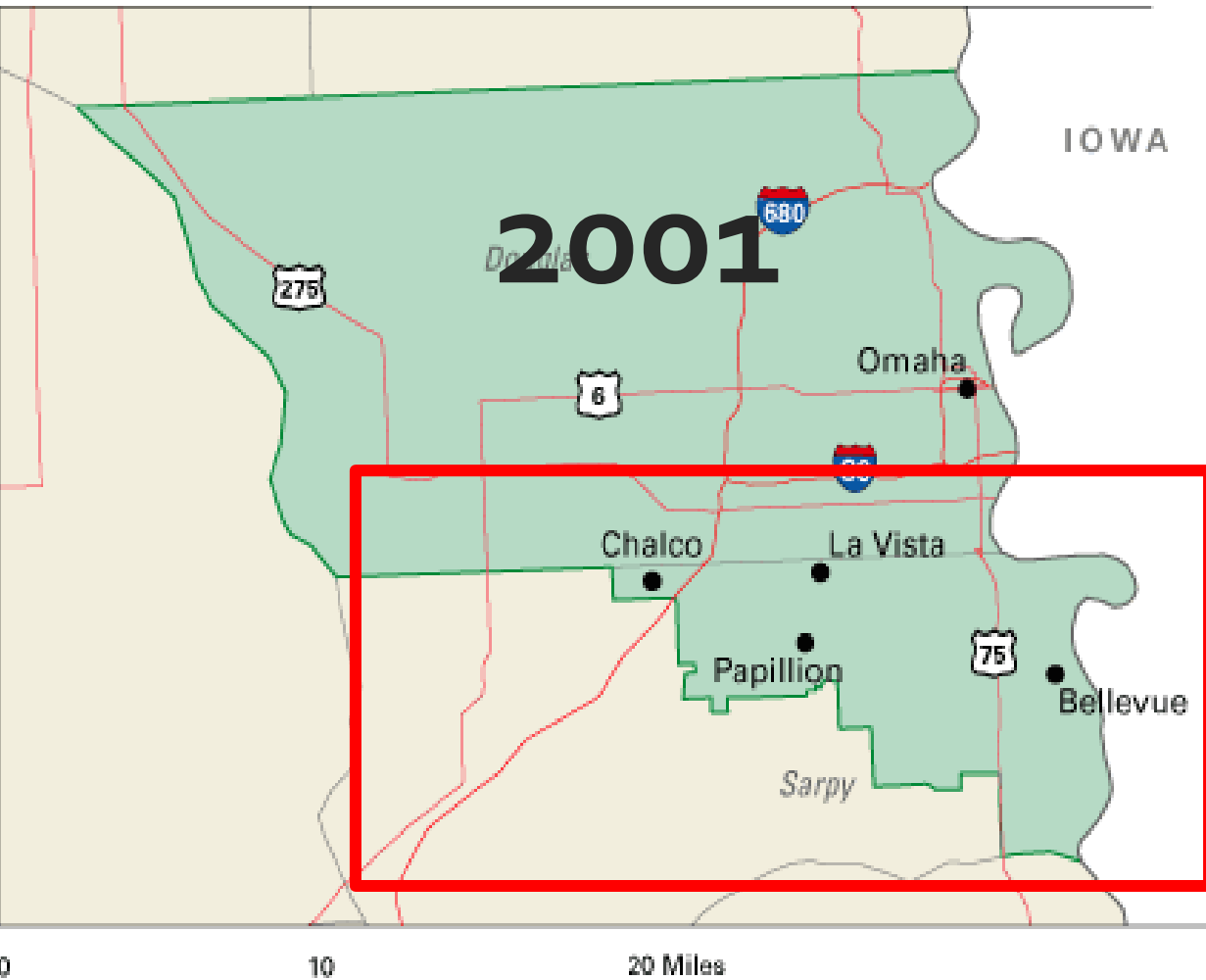
Example 1-Dist. 32 in 2011
Cracking
Partisan, Cultural Minority

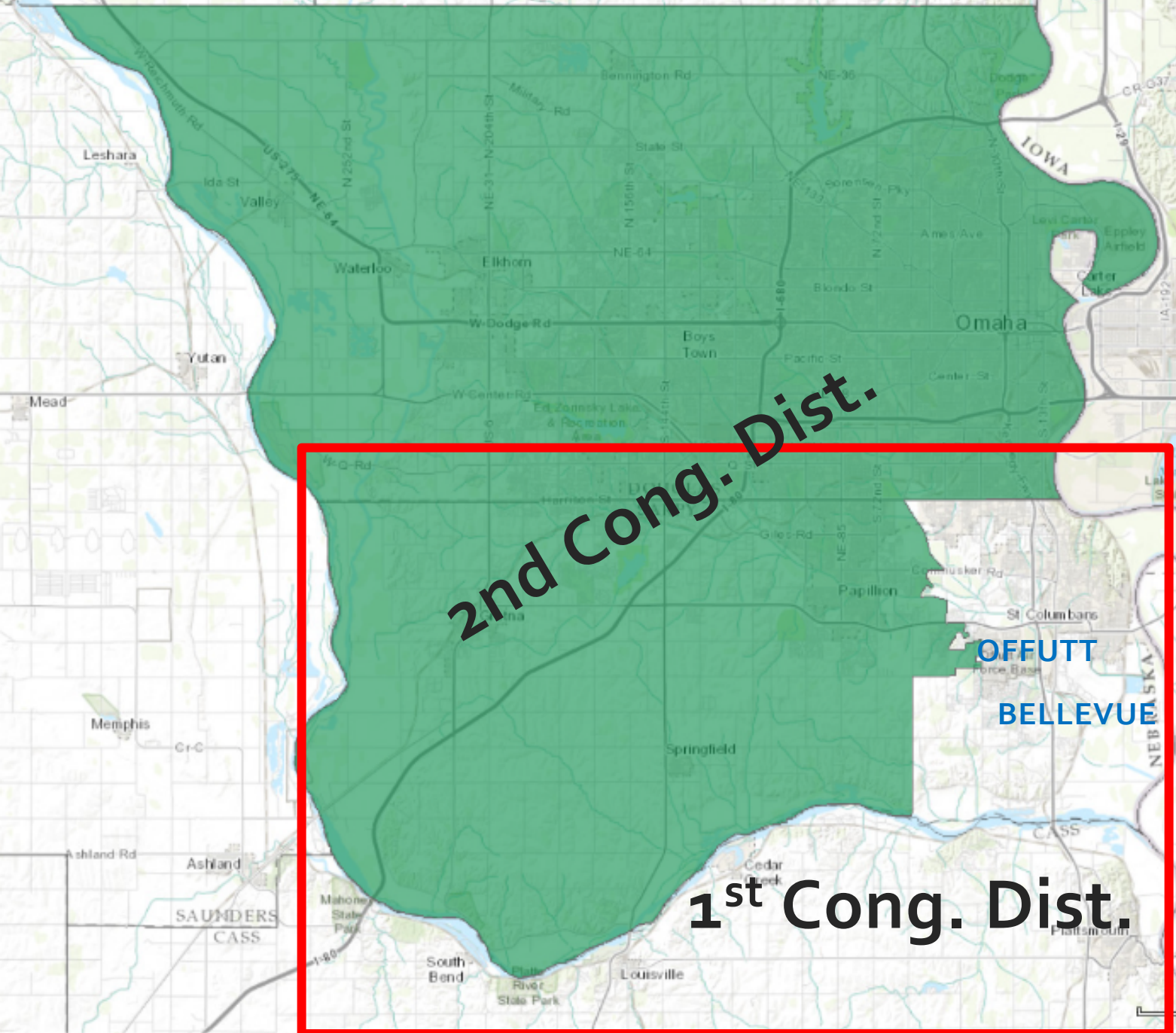


In 2011 a small portion of southwestern Lancaster County was added to District 32.

Example 2-Gerrymandering? 2nd Congressional District

Congressional District 2





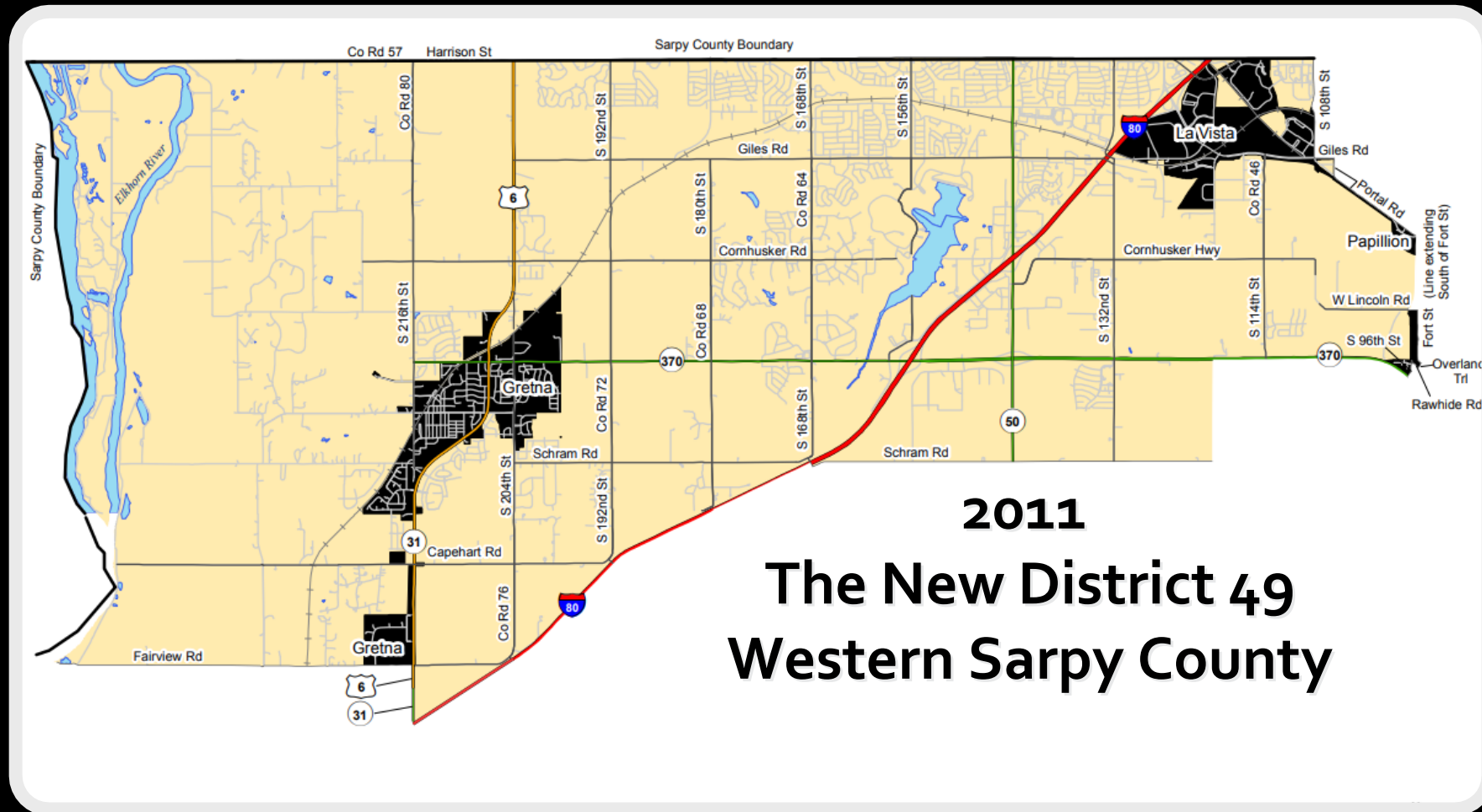
Results of the 2011 the 2nd Congressional District

redistricting:

- Bellevue & Offutt Air Base put into 1st Cong Dist.
- Western Sarpy County put into 2nd Cong. Dist.

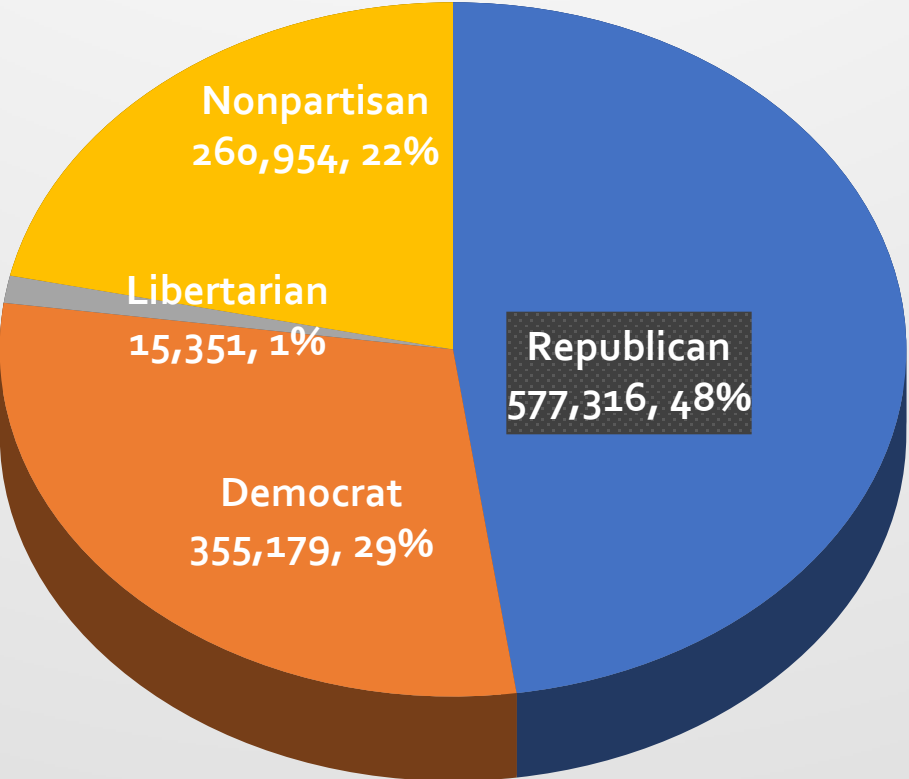
Result: Voter registration to the advantage of the party controlling redistricting process.

What's up with Sarpy County?



Partisan redistricting does not accurately or fairly represent Nebraska voters

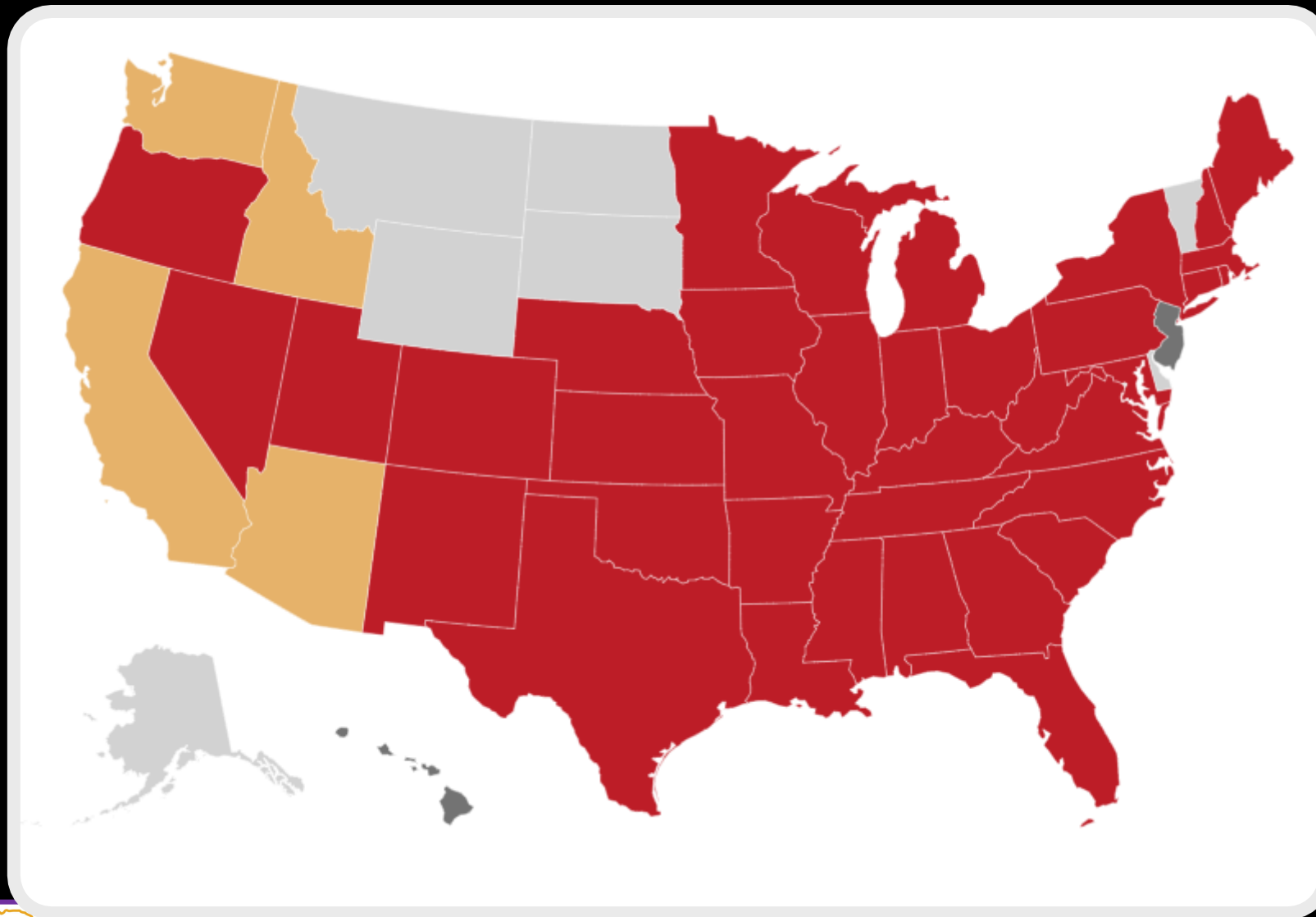
Registered Voters in Nebraska as of January 2, 2020



<https://sos.nebraska.gov/elections/elections-division>

This is a problem we can solve.

Redistricting methods in the US



The League of Women Voters of Nebraska urges passage of a fair and transparent redistricting bill.



Checklist

Fair Maps Activism

- ✓ Promote 2020 Census.
- ✓ Register to vote.
- ✓ Educate yourself.
- ✓ Show your support.
- ✓ Vote!
- ✓ Have fun along the way!

What's Next?

**SIGN
PETITION
HERE**